

3540 Durocher - 1D

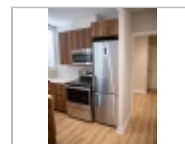
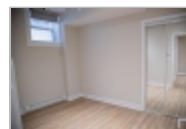
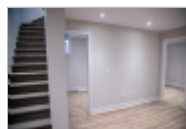
514-819-9713

3540 Durocher - 1D
Montreal, Quebec H2X-2E5

Rent: \$2,950.00 **Size:** 710 SqFt

3 Beds **2** Baths **Other**

Deposit: \$0.00 USD



Property Description

Apartment Note: Two floor apartment

Neighbourhood: Milton Park (McGill)

Found in the heart of the Milton Park (McGill Ghetto) neighbourhood, the Maple Court building is only a short walk away from McGill University. Nestled between Downtown Montreal, McGill University Campus, the Plateau, and Mont Royal Park, Maple Court is conveniently close to restaurants, cafes, bars, shops, grocery stores, public transit, and so much more.

Rebuilt in 2019, Maple Court was upgraded to a sleek modern interior design style. Each apartment space has been fitted with high-end finishings such as: quartz counter tops, stainless steel appliances, porcelain tiled bathrooms, and recessed LED lighting. Every space is well insulated and operates at high level of energy efficiency, bringing you low utility costs. Air exchangers help to provide the apartments with comfortable and clean filtered air. Maple Court offers a variety of apartment layout styles from airy studios to spacious four bedrooms.

The in-house laundry room provides tenants a simple and convenient way to do their laundry without ever needing to leave the building.

Maple Court is equipped with a variety of security measures from a keypad access to the building, to surveillance cameras throughout the building's common areas, security bars and fences, as well as an intercom buzzer for each apartment unit. All of these features allow for us to create and maintain a safe and secure living environment for our tenants.

Date Available: Immediately

Audom

Office Location
8250 Devonshire ([map](#))
Montreal, Quebec H4P 2P7

514-819-9713

