

## BRAND NEW 4/2 Available Immediately!

**(256) 701-8282**

3205 Jordan Farm Cir NE  
Huntsville, Alabama 35811-6006

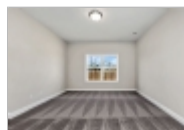
**Rent: \$1,975.00** **Size:** 1974 SqFt

**4** Beds **3** Baths **Single Family House**

**Deposit:** \$1,000.00 USD

For more information:

<http://www.pminorthalabama.com>



### Property Description

BRAND NEW! 4 Bedroom, 2 Bathroom, 2-car garage home is NOW available for move-in! This home has over 1,900 sqft! Spacious living area features high ceilings, vinyl wood flooring, and TONS of natural lighting. Main bedroom has is isolated and includes its own walk-in closet and private bathroom with dual sinks, a large tub and a walk-in shower! Great backyard with a covered patio that is great for entertaining! Don't Miss Out! Schedule your convenient self-showing today!

Tenant pays all utilities.

### Restrictions

**Dogs:** Dogs (ok)

**Cats:** Cats (ok)

**Smoking:** No Smoking

### Lease Details

1 Years

**Date Available:** Immediately

### PMI North Alabama-2

Office Location

**Bridgette Thomas**

**(256) 701-8282**

