

# Apply Today- 21961 West Casey Lane

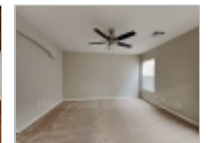
**18333270350**

21961 W Casey Ln  
Buckeye, Arizona 85326-8995

**Rent: \$2,520.00** **Size: 1831 SqFt**

**5 Beds 2 Baths Single Family House**

**Deposit: \$2,520.00 USD**



## Property Description

Available Now. Apply Now! Contact us for more information or apply by visiting our website and review our Application Qualifying Criteria and Pet Guidelines. For showing information, please call 833-327-0350.

21961 West Casey Lane - Picture yourself in this beautiful 5 bedroom 2 bath home with 1,831 square feet living space. This home features an open floorplan with the primary bedroom on the first floor and a 5th bedroom big enough to use as a family or rec room on the second floor. The kitchen includes all of the traditional appliances, wood cabinets, abundant counter space, and a breakfast bar. The laundry room is conveniently located on the second floor near 4 bedrooms. There are storage cabinets that provide ample storage in the attached 2 car garage. Sundance has grassy parks with pavilions, benches, and playground. Dont miss out on this incredible opportunity!

All HomeRiver Group residents are enrolled in the Resident Benefits Package (RBP) for \$49.95/month. This includes renters insurance, a move-in concierge service to make setting up your utilities and home services easier, \$1M identity protection, a top-tier resident rewards program, credit building with on-time rent payments, and quarterly HVAC air filter delivery (where applicable). More details are available upon application.

HomeRiver Group has partnered with Rhino to offer an affordable alternative to upfront cash security deposits. Approved residents can choose between paying a security deposit equal to one (1) months rent OR purchase a deposit replacement policy with Rhino at a fraction of the upfront cost. More information can be provided upon request.

Additional charges may apply, including an application fee, lease administration fee, pet fees and pet rent, and monthly Resident Benefits Package charges.

<https://www.insidemaps.com/app/walkthrough-v2/?projectId=0Aw9spE6g8&env=production;>

## Restrictions

**Date Available:** Immediately

**Dogs:** Dogs (ok)

**Cats:** Cats (ok)

## Property Frameworks - Phoenix-Scottsdale

Office Location

**18333270350**

