

# Glen Park Apartments

**623-934-7385**

6301 N 64th Drive  
Glendale, Arizona 85301

**Rent: \$675.00 - \$1,050.00**

**Size:** 647 - 945 SqFt

**1 - 3 Beds 1 - 2 Baths Apartment**

**Deposit:** \$200.00 - \$1,575.00 USD  
Refundable

**Application Fee:** \$25.00 USD

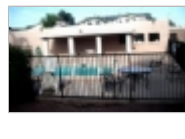
**Included Utilities:**

Gas / Electric / Water / Sewage / Garbage /  
Heat

**Schools:** Nearby schools

For more information:

<http://transpacifcassetmgt.com/>



## Property Description

Glen Park Apartments is close to schools, shopping and downtown Glendale. We offer 1, 2 and 3 bedrooms units with ALL utilities included. The community offers swimming pool, playground, on-site laundry, on-site maintenance, and covered parking.

1 bedrooms start at - \$675.00 plus tax

2 bedrooms start at- \$775.00 plus tax

(Prices are subject to change)

3 bedrooms start at- \$1050.00 plus tax

Check out our move in special of half off first month oac - credit problems? Call 623-934-7385 we might be able to help!

We welcome pets with a non-refundable pet fee.

Units are going fast! Don't miss this deal!

**Move in Special:** Half Off First Month OAC

## Restrictions

**Dogs:** Dogs (ok)

**Cats:** Cats (ok)

with non-refundable pet fee

**Smoking:** Smoking Allowed

## Lease Details

6 months to 1 year

**Section 8:** Housing Assistance Accepted

**Governing Area:** City of Glendale

**Date Available:** Immediately



## Glen Park Apartments

Office Location

PO Box 42199 (map)

Mesa, Arizona 85274

**Rene**

**623-934-7385**

