

Ridge at Searcy I & II

501-268-2209

2001 Quality Dr.
Searcy, Arkansas 72143

Rent: \$470.00 - \$970.00

Size: 703 - 1196 SqFt

1 - 3 Beds 1 - 2 Baths Apartment

Deposit: \$200.00 - \$350.00 USD

Application Fee: \$35.00 USD

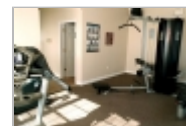
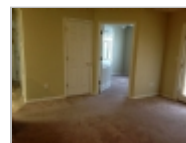
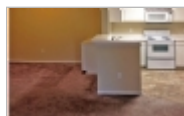
Included Utilities:

Water / Garbage

Schools: Great Schools located in Searcy
School District

For more information:

<http://www.richsmithmanagement.com>



Property Description

Now Leasing in Searcy, our quaint community welcomes you to call The Ridge at Searcy home. We have spacious 1, 2 and 3-bedroom apartment homes with all the features you are looking for. Plus, great schools, services and shopping are conveniently located nearby.

Move in Special: Call to inquire about specials

Restrictions

Dogs: Dogs (ok)

Cats: Cats (ok)

Restrictions, Deposit, and fee may apply

Housing Assistance Available

Lease Details

Call to Inquire About Lease Options Available

Section 8: Housing Assistance Accepted

Date Available: Immediately



Ridge at Searcy I & II

Office Location

9800 Maumelle Blvd (map)

North Little Rock, Arkansas 72113

501-268-2209

