

BRAND NEW - LAKE VIEW - SOLAR - ENERGY EFFICIENT - SMAR

646-228-5763

32941 Pacifica Pl, Lake Elsinore, CA
92530
Lake Elsinore, California 92530

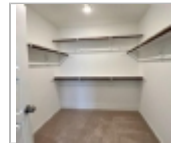
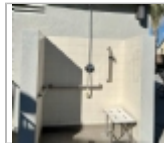
Rent: \$1,300.00 Size: 2288 SqFt

4 Beds 3 Baths Single Family House

Deposit: \$1,000.00 USD

For more information:

<http://www.Century.com>



Property Description

BRAND NEW - LAKE VIEW - SOLAR - ENERGY EFFICIENT - SMART HOME sits in the gated Westlake Village Community. 4 Bedrooms and 3 Full bathrooms. The ground floor has one bedroom and a full bath, the open concept living room connected with kitchen perfect for 5+ people family. The upper floor has 3 bedrooms, 2 full bathrooms, plus a spacious Den perfect for a home office or family entertainment. The large master bedroom has 2 master walk-in closets and a shower/ tub combo. West Lake Village is minutes from shopping, restaurants, schools, parks, Lake, and freeways. The gated pool is just 30 feet away from the house front door. Low utility expenses, Owner paid off Solar system; HOA offers Pool, Spa. Parks and Kids/dogs play area. Be the 1st family to enjoy life at this brand-new home.

Restrictions

Dogs: Dogs (ok)

Cats: Cats (ok)

Smoking: No Smoking

Section 8: Housing Assistance Not Accepted

Date Available: Immediately



Denman Realty Group, LLC

Office Location
1555 E. University Drive (map)
Suite 2
Mesa, Arizona 85203

Terry Owen
646-228-5763

