

SPACIOUS HOME

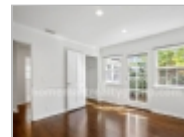
770-652-32667

10630 Missouri Ave, Los Angeles, CA
90025
Los Angeles, California 90025

Rent: \$1,200.00 Size: 1424 SqFt

3 Beds 2 Baths Single Family House

Deposit: \$1,000.00 USD



Property Description

3 bed/2 bath home on corner lot in prime Westwood neighborhood filled with charm and character throughout. Brick walkway to front porch opens with farmhouse Dutch door to entry and living room w/ bay window & fireplace. Dining area with sliding door opening to beautiful outdoor patio covered with veranda and private backyard w/ new fence, ideal for outdoor dinners and entertaining. Sun-filled updated kitchen w/ quartz countertops, stainless steel appliances & breakfast area w/ large window overlooking backyard. Laundry room off kitchen w/ storage and access to backyard. 3 bedrooms include a 3rd bedroom w/ ensuite remodeled 3/4 bath, wainscoting & french doors to backyard. 2nd full bath w/ updates located in hallway. Features include newly refinished hardwood flooring, dual paned windows, central ac/heat, recessed lighting throughout. Close proximity to Century City Mall, UCLA, Westwood Blvd. retail & restaurants. Westwood Charter School.

Homemart Realty Group, Inc.

Office Location
284 Hurricane Shoals Road
NW ([map](#))
Lawrenceville, Georgia 30046

Sam Gosmas
770-652-32667

