

## Large and Luxurious, 2 Bedroom/2 Bath Available for lat

**(818) 253-1742**

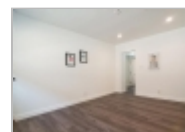
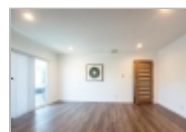
2040 S Sherbourne Dr #5  
Los Angeles, California 90034

**Rent: \$3,208.33** **Size:** 1100 SqFt

**2 Beds 2 Baths Apartment**

**Deposit:** \$3,500.00 USD

**Included Utilities:**  
No Utilities Included



### Property Description

OFFERING ONE MONTH FREE RENT FOR IMMEDIATE APPLICATIONS!\*

This discount would bring your net rent down to \$3208.33/month for the first 12 months! Lease would say \$3500/month.

Beautifully remodeled, large and luxurious 2 bedroom, 2 full bathrooms, with One assigned parking spaces and full size washer and dryer in home

\*1100 Sq Feet

\*Private balcony/patio.

\*Modern style Quartz countertops and home like chic front door,

\*Exquisite backsplash and expensive shower tiles

\*Wood-like laminate flooring throughout

\*Central A/C and Heating

\*All stainless appliances and includes Refrigerator, Dishwasher, Range/Over, Microwave.

And Location!! Location!! Location!! Easy access to 10fwy and Centrally located between Santa Monica, Beverly Hills, Culver city, Miracle Mile and short drive to Downtown LA.

Available for Mid August Move-In...!!

**Date Available:** Immediately

### The 2-4 Unit Specialist

Office Location

**Dominique Hudson**  
**(818) 253-1742**

