

Home would be available soon.

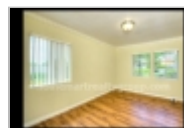
931-892-5212

1360 Tropical Ave,
Pasadena, California 91107

Rent: \$1,900.00 Size: 1800 SqFt

3 Beds 2 Baths Single Family House

Deposit: \$1,000.00 USD



Property Description

Quiet mountain views and city lights in Hastings Ranch (northeast Pasadena) Freestanding units in 1-unit building. 2-car Garage Parking. Gorgeous renovated home in quiet Hastings Ranch area. One minute from the San Gabriel Mountains; two blocks from prestigious Alverno High School. Near Eaton Canyon and golf course, Sierra Madre village, Old Town Pasadena, shopping, markets, malls and dining. **** Three large yards, including a flat fenced grassy backyard for children and dogs. Brick patio with views of mountains, valleys, city lights. Gardening service included. **** One level; no stairs. Two-car garage with storage racks. Washer and Dryer in kitchen. Central air. Fireplace in the living room. **** Two blocks to the award-winning Don Benito Elementary School, hiking trails. Three blocks to Hamilton Park. Five minutes to grocery stores, Metro Gold Line, gyms, Starbucks, and the adorable Sierra Madre village.

Restrictions

Dogs: Dogs (ok)

Cats: Cats (ok)

Smoking: No Smoking

Section 8: Housing Assistance Not Accepted

Date Available: Immediately

Homemart Realty Group, Inc.

Office Location
284 Hurricane Shoals Road
NW (map)
Lawrenceville, Georgia 30046

Jessica Elliot
931-892-5212

