

Gorgeous, Completely Remodeled 3/2 Condo in Maitland!

407.628.2500

614 Grove Court Unit 513
Maitland, Florida 32751

Rent: \$1,950.00 **Size:** 1256 SqFt

3 Beds 2 Baths Condo

Deposit: \$1,950.00 USD
standard approval amount

Application Fee: \$70.00 USD

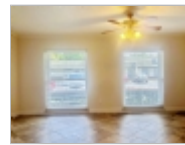
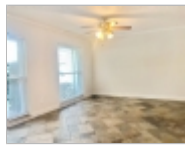
Included Utilities:

Lawn Service

Schools: contact orange county school website for information.

For more information:

<http://www.jandergroup.com>



Property Description

AVAILABLE FOR MOVE-IN NOW!!

Conveniently located in Maitland off SR 17-92, this one-story condo is tucked away in a small, quiet lake community. You will fall in love with this completely remodeled condo - from floor to ceiling, no detail was spared. There is a large Great room, which opens to an exquisite modern Kitchen featuring a spacious island that could seat 6 people comfortably. All Kitchen appliances are stainless steel, cabinets are upgraded, beautiful back-splash, granite counters and updated lighting finish off this gorgeous space. There is also plenty of storage in the Kitchen with the tall cabinets, as well as a pantry. The floors in all the main areas are a pretty tile that looks like stone, and the Bedrooms have a laminate wood for easy care.

The Primary Bedroom has a large, walk-in custom closet and a beautiful Primary Bath with a huge walk-in shower, lots of tile and current lighting and fixtures. The other 2 Bedrooms are spacious for the size of the condo. They have custom closets as well and a 2nd Bath that is very similar to the Primary Bathroom. Both bathrooms have showers. There is not a tub in this home. There are ceiling fans in the main rooms and bedrooms. Neutral bone color paint is throughout the house which makes for easy decorating. There are sliding glass doors in the Primary Bedroom and also Bedroom 2 that go out to the white vinyl fenced large private porch. The community is well kept and has a beautiful pool that overlooks Lake Gem!

You can't beat this location - close to all the major shopping and dining in Maitland and Winter Park. This condo is a show-stopper and is a must see!

HOA - 1 PET WITH 25 LBS MAX WEIGHT

Association provided Lawn Service.

****REQUIRED HOA PROCESS AND APPLICATION FEES****

TWO VEHICLES MAX

Always check our website - www.jandergroup.com - for up-to-date info and availability of this home or email us at Leasing@jandergroup.com.

******IMPORTANT****** When replying please make sure to send to leasing@jandergroup.com. Most sites will send your reply to a site specific address instead of our leasing@jandergroup.com address.



The Jander Group, Inc.

Office Location
1440 Howell Branch Road (map)
Winter Park, Florida 32789

JANDER LEASING STAFF

407.628.2500 x1



Financial Requirements:

There is a nonrefundable lease application fee per adult or married couple, which must be paid to process a lease application. Please find the lease application and fee information available on our website.

Applicants meeting the standard and customary qualifications for rental have a security deposit equal in value to one month's rent. Conditional approvals require a higher security deposit. At minimum, lease applications will have the following checks completed: full-time local employment (no co-signers), current and previous verifiable rental/mortgage payment history, standard retail credit report, eviction search, criminal record history, bankruptcies and foreclosures/short sales search. Please note that applicants with a bankruptcy discharged for less than two years cannot be approved (NO Exceptions).

At minimum, any required deposits, first month's rent, and maid cleaning fee are due at lease commencement. #60401

Restrictions

Dogs: Dogs (ok)

Cats: Cats (ok)

PETS ARE ON AN APPROVAL BASIS. BREED
RESTRICTIONS APPLY

Smoking: No Smoking

Lease Details

minimum of one year

Date Available: Immediately