

Nice 2/2 Lakefront Maitland Condo in Beautiful Communi

407.628.2500

1440 Lake Shadow Circle
Apt 8204
Maitland, Florida 32751

Rent: \$1,650.00 **Size:** 1048 SqFt

2 Beds 2 Baths Condo

Deposit: \$1,650.00 USD
standard approval amount

Application Fee: \$70.00 USD

Included Utilities:

Lawn Service

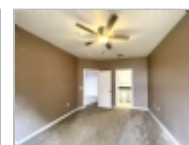
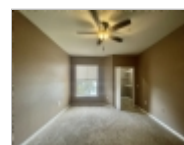
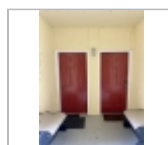
Heat Type:

electric

Schools: Visit Orange County Public Schools

For more information:

<http://www.jandergroup.com>



Property Description

AVAILABLE NOW

Welcome to Visconti West, where you'll find an amazing 2/2 condo with a breathtaking lake view in the heart of Maitland, FL. This gated community offers a secure and peaceful environment for you to call home. Take a dip in the community pool on those hot summer days or enjoy some quality time at the community recreation center which includes a gym. The community also has amazing walking paths with lake views, as well as a playground.

This 2 Bed 2 Bath has great views of Lake Shadow from its spacious screened balcony porch. Located on the second floor, this condo features an open floorplan. The Kitchen is open and overlooks the Great Room and Dining Room. The Kitchen has tile flooring and comes with refrigerator, stove, and dishwasher. There are two nice size bedrooms with views of the lake and a walk-in closet. There are also two full bathrooms.

The laundry room comes with a full size washer and dryer. Stay comfortable year-round with central A/C and heat. Relax and unwind on your screened-in porch, where you can enjoy the stunning lake view. This condo is conveniently located close to shopping centers and just a short drive away from I-4, 429, 434, 436 and 17-92, making commuting a breeze. This one will not last long! One small pet.

TWO VEHICLES MAX

CONDO ASSOCIATION LEASE APPLICATION

After lease application approval from The Jander Group Inc., the prospective tenant is required to complete a separate HOA lease application. Please request additional details if you decide to apply to lease this home. Association application fee is \$100 per applicant. HOA has many restrictions on dog breeds.

Always check our website - www.jandergroup.com - for up-to-date info and availability of this home or email us at Leasing@jandergroup.com.

****IMPORTANT**** When replying please make sure to send to leasing@jandergroup.com. Most sites will send your reply to a site specific address instead of our leasing@jandergroup.com address.

Financial Requirements:

There is a nonrefundable lease application fee per adult or married couple, which must be paid to process a lease application. Please find the lease application and fee information available on our



The Jander Group, Inc.

Office Location
1440 Howell Branch Road (map)
Winter Park, Florida 32789

Leasing Staff
407.628.2500



website.

Applicants meeting the standard and customary qualifications for rental have a security deposit equal in value to one month's rent. Conditional approvals require a higher security deposit. At minimum, lease applications will have the following checks completed: full-time local employment (no co-signers), current and previous verifiable rental/mortgage payment history, standard retail credit report, eviction search, criminal record history, bankruptcies and foreclosures/short sales search. Please note that applicants with a bankruptcy discharged for less than two years cannot be approved (NO Exceptions).

At minimum, any required deposits, first month's rent, and maid cleaning fee are due at lease commencement. #62801

Restrictions

Dogs: Dogs (ok)

Cats: Cats (ok)

PETS ARE ON AN APPROVAL BASIS. BREED
RESTRICTIONS APPLY

Smoking: No Smoking

Lease Details

minimum 12 months

Date Available: Immediately