

PRIME Location, Lovely St Johns Home!

703-801-5607

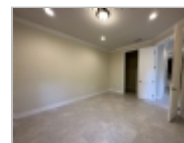
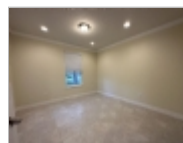
56 Park Front Lane
St. Augustine, Florida 32095

Rent: \$3,800.00

3 Beds 2 Baths Single Family House

Deposit: \$3,800.00 USD

For more information:
www.navytonavy.com



Property Description

Your chance to live the Palencia Lifestyle! PRIME location just minutes to the school, parks, shopping, restaurants, and more! Spacious long foyer entry leads to the open concept family room, dining area, and gourmet kitchen. Enjoy plenty of counter and good prep space, alongside tons of cabinets for storage! Walk in Pantry too. A small drop zone/desk space off of kitchen, leads to the garage. There is a front flex space in the front downstairs with double doors- ideal for a home office, kids area, or a spare bedroom option. Upstairs you will find all bedrooms. Spacious primary suite with en suite offering a stand up shower, dual sink vanity, and large walk in closet. Two additional secondary rooms that share a bathroom. Laundry is also upstairs. Plenty of storage throughout the home! Screened Patio out back, and enjoy a private preserve lot. Rent includes lawn care, pest control and access to community amenities!

Restrictions

Dogs: Dogs (ok)

Cats: Cats (ok)

Smoking: No Smoking

Section 8: Housing Assistance Not Accepted

Date Available: Immediately

Navy to Navy Homes

Office Location

4540 Southside Blvd Suite

702 (map)

Jacksonville, Florida 32216

Kelly Nye

703-801-5607

