

Atlanta - 3BR/2BA Ranch - Near Beltline!!! See M/I Spec

14043839426

388 Illinois Ave NW
Atlanta, Georgia 30314-1108

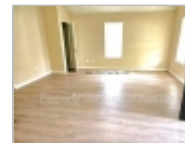
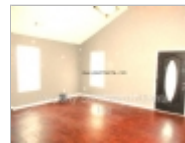
Rent: \$1,495.00 **Size:** 1500 SqFt

3 Beds 2 Baths Single Family House

Deposit: \$0.00 USD

For more information:

<http://www.psatlanta.com>



Property Description

388 Illinois Avenue NW, Atlanta, GA 30314 ****NO PETS****

Get a \$350 move-in special off the first full month's rent.

****Housing vouchers are not accepted on this home. Security deposits start at an amount equal to one months rent and can go up based on credit screening****

Availability: Ready now!

Cozy ranch with covered front porch. Enter into an open floor plan with vaulted ceiling with a living room/dining combination. The kitchen is also open and has all appliances (refrigerator, dishwasher, electric stove). There is a laundry closet with washer & dryer included. There are two spare bedrooms, a full hall bath with single vanity and tub/shower combination. The master bedroom has two closets and the master bath has dual vanities and a tub/shower combination. Parking on driveway with ample street parking.

Directions: I-20 West to Exit 33. Make left on Joseph E. Boone Blvd., right on Westchester Blvd., then right on Illinois Avenue.

Elementary: Woodson Park Academy
Middle: John Lewis Invictus Academy/Harpet-Archer
High: Douglass

Built 1999 Approx. 1,500 s/f

Restrictions

Date Available: Immediately

Dogs: No Dogs

Cats: No Cats



Property Service Of Atlanta, Inc.

Office Location
2619 Sandy Plains Road (map)
Marietta, Georgia 30066

14043839426



