

This amazing 3-bedroom 2.5 bath home is freshly decorat

646-124-6129

17000 Bowline View Trl, Louisville,
KY 40245
Louisville, Kentucky 40245

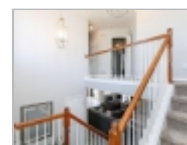
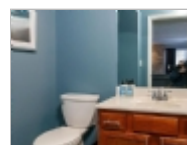
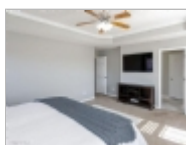
Rent: \$1,400.00 Size: 2100 SqFt

3 Beds 3 Baths Single Family House

Deposit: \$1,000.00 USD

For more information:

<http://www.Century.com>



Property Description

Once you enter the front door you will see the large great room that opens to the dining and kitchen area. The great room comes with a wood burning fireplace with a gas starter an overhead lighting fixture that s surrounded by a natural stone veneer look. There is a ceiling fan and lots of windows for tons of natural lighting. The kitchen has beautiful oak cabinets with updated hardware, a tile back splash and a large buffet countertop. The first floor has incredible new laminated flooring that covers the whole area, and blends with the light color paint on the walls. Upstairs are 3 bedrooms, a full bath and laundry area. The large primary bedroom has a double trey ceiling, a full bath with a double bowl vanity and large walk-in closet. Outside you have a 2-car side entry garage on a double wide driveway, a corner lot that backs up to a wooded area with a scenic view and privacy, and 16x24 deck off the family room that is great for entertaining.



Denman Realty Group, LLC

Office Location
1555 E. University Drive (map)
Suite 2
Mesa, Arizona 85203

Kimberly Durry
646-124-6129

