

## comfortable home

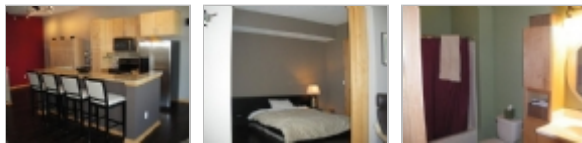
**303-326-0599**

3640 Wooddale Ave S UNIT 316  
Saint Louis Park, Minnesota 55416

**Rent:** \$1,500.00 **Size:** 920 SqFt

**1** Beds **1** Baths **Single Family House**

**Deposit:** \$1,000.00 USD



### Property Description

Luxurious Village in the Park Urban Lofts! One bedroom, one bathroom condo with spacious layout and a convenient location. Easy access to Hwy 100, 394, Hwy 7, and Greenway. Located near Byerly's, Target, and Trader Joe's. Just minutes from downtown, West End, and Excelsior & Grand. In unit washer/dryer and stainless steel kitchen appliances. This home features upgraded wood flooring, granite countertops, 10' ceilings, and large windows. Heated, underground parking with storage unit. Secured building with fitness center and party room. Water and garbage included.

### Restrictions

**Dogs:** Dogs (ok)

**Cats:** Cats (ok)

**Smoking:** Smoking Allowed

**Section 8:** Housing Assistance Not Accepted

**Date Available:** Immediately

### Stars And Stripes Homes, Inc

Office Location  
601 Salida Way #B6 ([map](#))  
Aurora, Colorado 80011

**Shari Oliver-Watkins**  
**303-326-0599**

