

Up for rent is a Coach Home II with almost 2800sqft of

646-124-6121

1024 Robbinsville Edinburg Rd,
Robbinsville, NJ 08691
Robbinsville, New Jersey 08691

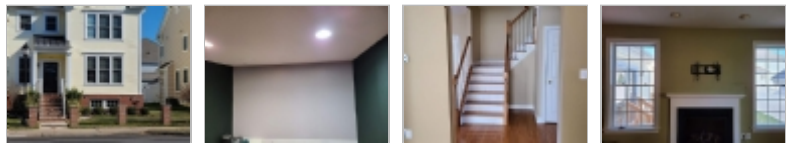
Rent: \$1,300.00 Size: 1850 SqFt

3 Beds 3 Baths Single Family House

Deposit: \$1,000.00 USD

For more information:

<http://www.Century.com>



Property Description

Up for rent is a Coach Home II with almost 2800sqft of finished space! Vintage architecture meets the modern-day convenience of this planned Town Center community in our small historic town of Robbinsville. The front porch welcomes you to this well-appointed and upgraded home with hardwood floors. Perfect for entertaining the Gourmet Eat-in extended Kitchen opens up to the family room area, with plenty of stone top counter space offering upgraded kitchen cabinetry, upgraded tiled backsplash, and all the appliance package. The family room offers a gas fireplace and custom mantle, that leads to outdoor newly fenced in backyard. The driveway was redone with paves. This Coach home also offers over 1000 sqft of finished space in the basement 2nd Floor offers three generous sized bedrooms with Master Suite and Master bath with jacuzzi. Two-minute walk to train shuttle, shops, restaurants, parks, and lakes. Minutes to 95, NJ Turnpike, 295, 195 to Shore points and Great Adventure Safari, Theme and water parks, 295. Lastly only minutes to the largest park of NJ.

- Dual-zone air conditioning system.
- 1 car garage
- 1 car space and a lot of parking in the front.
- Great for entertainment with wall mount and home theater ready.
- Separation for office space or kids area in the basement
- Automatic garage door opener
- No HOA

Restrictions

Dogs: Dogs (ok)

Cats: Cats (ok)

Smoking: No Smoking

Section 8: Housing Assistance Not Accepted

Date Available: Immediately



Denman Realty Group, LLC

Office Location
1555 E. University Drive (map)
Suite 2
Mesa, Arizona 85203

Steven king
646-124-6121

