

Fountain Lake

405-603-3493

14025 N. Eastern Ave.
Edmond, Oklahoma 73013

Rent: \$2,490.00 **Size:** 1050 SqFt

2 Beds 2 Baths **Apartment**

Deposit: \$250.00 USD
Refundable Security Deposit

Included Utilities:

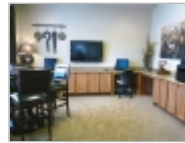
Electric / Water / Sewage / Garbage / Cable TV / High Speed Internet / Phone / Heat

Heat Type:

Electric

For more information:

<http://www.ahicorporatehousing.com/oklahoma-city-corporate-housing>



Property Description

Fall into style at the extravagant Fountain Lake Apartments while enjoying the comfort and luxury of upscale living in Edmond. Fountain Lake is conveniently located near the University of Central Oklahoma, Oklahoma Christian University, Purina, Chesapeake, OU Medical Center, Quail Springs Mall, Frontier City, the Oklahoma City Zoo and so much more! Take advantage of our many amenities, including a 24 hour state-of-the-art fitness center, a resort style swimming pool with large sundeck, an executive business center and much more. Come and enjoy worry-free living at Fountain Lake.

Other features:

- Washer/dryer
- Clubhouse
- Pet friendly

Restrictions

Dogs: Dogs (ok)
Cats: Cats (ok)
\$300 NRF - Up to 45 lbs

Smoking: No Smoking

Lease Details

30-day minimum stay requirement

AHI Corporate Housing

Office Location

Krista Townsend
405-603-3493

