

## cute country farmhouse

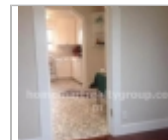
**678 670 1909**

29641 S Cramer Rd, Molalla, OR  
97038  
Molalla, Oregon 97038

**Rent: \$1,250.00** **Size:** 630 SqFt

**1** Beds **1** Baths **Single Family House**

**Deposit:** \$1,250.00 USD



### Property Description

cute country farmhouse is located NW of Molalla. Renovated in 2014, this was a mother-in-law cottage and is across the driveway from the main farmhouse. Enjoy beautiful sunsets, berry picking by the bucket, fruit from trees on the property, and your own space to garden. One bedroom home with circular flow, updated kitchen and bathroom. Heat pump. There is a detached storage shed. Water and sewer services included in the \$1250/month rent.

### Restrictions

**Dogs:** Dogs (ok)  
**Cats:** Cats (ok)

**Section 8:** Housing Assistance Not Accepted

**Date Available:** Immediately

### Homemart Realty Group, Inc.

Office Location  
284 Hurricane Shoals Road  
NW (map)  
Lawrenceville, Georgia 30046

**Pamela Grant**  
**678 670 1909**

