

Ashcreek Commons

503-244-1707

11230 SW 62nd Avenue
Portland, Oregon 97219

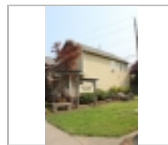
Rent: \$1,640.00 - \$2,060.00

Size: 1280 - 1535 SqFt

3 - 4 Beds 2 Baths Single Family House

For more information:

<http://www.ipmco.net>



Property Description

***** NO AVAILABILITY *****

Ashcreek Commons, constructed in 2004, features 21 three and four-bedroom, single-family homes. This community is conveniently located off SW Barbur Blvd. and is near public transportation, I-5 and Highway 99.

Ashcreek Commons offers spacious homes in a professionally landscaped residential area that is close to through traffic. The homes feature fenced back yards, front porches, patios with locked storage areas, dishwashers, disposals, washers and dryers. The community has a playground and assigned parking. It is close to Lesser Park, PCC Sylvania, shopping, bus lines and freeway access.

Income Restrictions Apply

Property Manager

Office Location
1800 Southwest 1st Ave Ste
220 ([map](#))
Portland, 97201

Property Manager
503-244-1707

