

# The Flanders

**503-274-4458**

2030 NW Flanders Street  
Portland, Oregon 97209

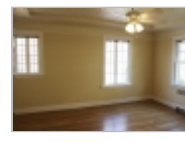
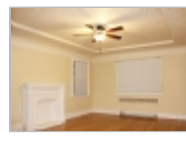
**Rent: \$1,150.00 - \$1,350.00**

**Size:** 450 - 990 SqFt

**0 (studio) - 1 Beds 1 Baths Apartment**

For more information:

<http://www.ipmco.net>



## Property Description

The Flanders is a restored, historic building listed on the National Register of Historic Places. The building features tall ceilings, on-site laundry facilities, controlled access entryway, and bike storage. The property also features a common area in the back with a picnic table for residents to enjoy the outdoors. The one and three bedroom units have hardwood flooring, separate dining areas, clawfoot tubs, along with historic architectural details and molding. Two bedroom units feature lots of light and balconies. Located at the intersection of the charming Goose Hollow & Nob Hill historic neighborhoods,

The Flanders is centrally located between shopping in The Pearl District and NW 23rd, and within walking distance of nearby Trader Joes and Fred Meyers and an abundance of fantastic bars and restaurants in the area. The Flanders offers all the benefits and access of big city living with the charm of a historic neighborhood.

## Restrictions

No Pets

## Income Property Management Co.

Office Location  
1800 Southwest 1st Ave Ste  
220 ([map](#))  
Portland, 97201

**Property Manager**  
**503-274-4458**

