

Beautifully landscaped country setting with an abundanc

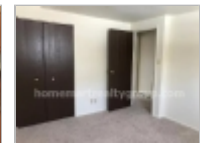
863 521 2432

236 Lexington Dr
236 Lexington Dr
Cranberry Township, Pennsylvania
16066

Rent: \$800.00 **Size:** 988 SqFt

2 Beds **1.5 Baths** **Single Family House**

Deposit: \$1,000.00 USD



Property Description

Cranberry Township - Now Ranked as an Americas's Top Community!
Well established community located in prestigious Cranberry Township. Only 25 minutes to downtown and approximately 30 minutes to Grove city outlet. Just minutes to Interstate 79, Rt 228, Rt 8, Rt 19 and the turnpike. Easy commute into Pittsburgh, Wexford and the North Hills. Conveniently located to shopping, restaurants, activities, places of worship and community park with large pool. Only minutes from Cranberry Park and North Boundary Park/Water Park. Conveniently located to the UPMC healthcare facilities along with general, specialized medical practices and Westinghouse.
Beautifully landscaped country setting with an abundance of open green space. Country living with all the conveniences!
Individualized floor plans and finishes such as cabinets, flooring and carpeting. See photo gallery. All units with basement storage.
Onsite 24 hour access locked secure laundry facility.
Large colorful playground with increased open green space for kids to run and play.
Award winning Seneca Valley School District.
Tenant pays all utilities except garbage service which is included in rent. Parking Lot snow removal and lawn care included in rent.

Restrictions

Dogs: Dogs (ok)

Cats: Cats (ok)

Smoking: Smoking Allowed

Section 8: Housing Assistance Not Accepted

Date Available: Immediately

Homemart Realty Group, Inc.

Office Location
284 Hurricane Shoals Road
NW (map)
Lawrenceville, Georgia 30046

John Arnold
863 521 2432

