

# 1135 Graham Ave, Monessen, PA 15062

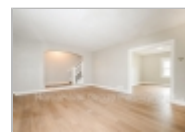
**18336340811**

1135 Graham Ave  
Monessen, Pennsylvania  
15062-1832

**Rent: \$1,017.00** **Size:** 1350 SqFt

**3** Beds **1** Baths **Single Family House**

**Deposit:** \$1,017.00 USD



## Property Description

Available Now! Apply Now! Contact us for more information or apply by visiting our website and review our Application Qualifying Criteria and Pet Guidelines. For showing information, please call 833-634-0811.

\*Housing vouchers accepted!

When exploring our listings, please be aware that the affordability calculator may not reflect local Housing Authority (HA) rent figures. Unlike many other markets, the listed rates reflect the HA figures, which can differ from the standard calculations used by AH.com.

3 bedroom, 1 bathroom, 2 story home located in Monesson. Enjoy a decorative fireplace in the spacious living room, dining room for the family and spacious fully equipped kitchen. Full basement is great for entertaining or extra storage! Off street parking located in the back alley. Close to shopping, restaurants and the Monongahela River.

HomeRiver Group has partnered with Rhino to offer an affordable alternative to upfront cash security deposits. Approved residents can choose between paying a security deposit equal to one (1) months rent OR purchase a deposit replacement policy with Rhino at a fraction of the upfront cost. For more information, visit SayRhino.com

Pets Accepted (Up to 3) on a case by case basis with approval and payment of applicable fees. \$300 non-refundable pet fee per pet. Breed restrictions apply. To review our Application Qualifying Criteria and Pet Guidelines prior to applying, please see Tenant Criteria on our website.

RED FLAGS - HomeRiver Group does not advertise properties on Craigslist, Facebook Marketplace, LetGo or other classified advertising websites. We will never ask for funds through CashApp, Zelle, cash, Venmo, Apple Pay, Paypal or other peer to peer networks. If you believe one of our properties has been listed on these sites by a scammer, please notify the office. Verify office number by Google.

\*All info /data contained herein is deemed to be accurate but it is not warranted, photos similar. Fireplaces may be decorative only.\*

Additional charges may apply, including an application fee, and lease administration fee. Tenants are responsible for utilities and lawn care.

<https://www.planomatic.com/692196>

## Restrictions

**Date Available:** Immediately

**Dogs:** Dogs (ok)

**Cats:** Cats (ok)

## Property Frameworks - Pittsburgh

Office Location

**18336340811**



