

SUPREME PALACE

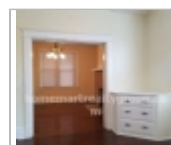
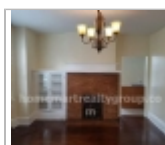
646-653-5718

1250 Peermont Ave
Pittsburgh, Pennsylvania 15216

Rent: \$1,300.00 **Size:** 2121 SqFt

4 Beds **3.5 Baths** **Single Family House**

Deposit: \$1,000.00 USD



Property Description

Spacious 4 Bedroom, 3 1/2 bathrooms, off Street parking pad , Large eat in Kitchen with Island, Kitchen equipped with Refrigerator, Range, Dishwasher, Microwave above range or bring your own appliances. Hardwood floors, tile and carpeting. 3 room air conditioners. First floor has one of the full bathrooms, large basement, there is a washer and dryer. The Home has lots of Charm & Character and light because of corner lot. Large front porch. Located on the border of Mt. Lebanon District. One Block to Bus stop and two blocks to the Trolley (Pittsburgh's "T") which travels to Downtown Pittsburgh or South Hills Village area. One Block Walking distance to Dormont Business District and 5 min walk to Mt. Lebanon business district.

Homemart Realty Group, Inc.

Office Location
284 Hurricane Shoals Road
NW (map)
Lawrenceville, Georgia 30046

John Coady
646-653-5718

