

The Metropolitan

615-613-0423

101 Brixworth Lane
Nashville, Tennessee 37205

Rent: \$2,790.00 - \$3,420.00 **Size:** 700 - 1000 SqFt

1 - 2 Beds **1 - 2 Baths** **Apartment**

Deposit: \$0.00 - \$250.00 USD
Credit Card on file

Included Utilities:

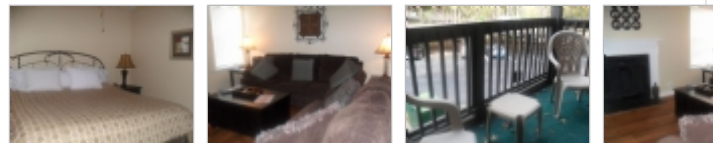
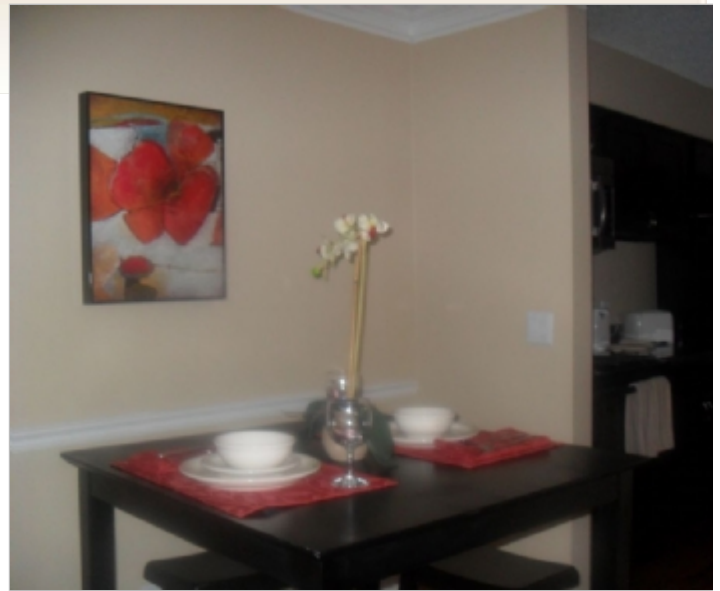
Gas / Electric / Water / Sewage / Garbage / Lawn Service / Cable TV / High Speed Internet / Phone / Heat / Snow Removal

Heat Type:

Electric

For more information:

<http://www.ahicorporatehousing.com/nashville-corporate-housing>



Property Description

The Metropolitan sits among 100 year old trees in the urban upscale area known as West End. Convenient to all daily needs such as grocery, eateries and coffee shops. Just 2.5 miles west of downtown Nashville with easy access to I-440 and I-65. Close to historic Belle Meade Plantation, Percy Warner Park and just a short drive to the famous Loveless Café on Highway 100 where you can eat award winning scratch buttermilk biscuits with homemade preserves to your hearts content. The Metropolitan offers a nice swimming pool with patio, 24 hour fitness gym and cyber café. The property offers both one and two bedrooms with quaint courtyard, and wooded views.

Restrictions

Dogs: Dogs (ok)

Cats: Cats (ok)
35 lbs max

Smoking: No Smoking

Lease Details

30 day min

Section 8: Housing Assistance Not Accepted

Date Available: Immediately

ExecuStay Nashville

Office Location

Kali Salter

615-613-0423

