

Beautiful family home

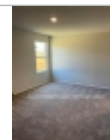
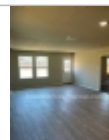
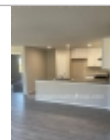
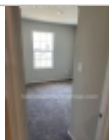
646-765-5788

3806 Trueta Pass,
Converse, Texas 78109

Rent: \$1,195.00 Size: 1667 SqFt

4 Beds 2 Baths Single Family House

Deposit: \$1,000.00 USD



Property Description

Located in the laidback city of Converse, TX, Paloma is a masterplan community features a peaceful, rural atmosphere with easy access to local attractions. Situated off Loop 1604, just south of I-10, Paloma residents may enjoy convenient access to Randolph Airforce Base, city parks, great schools and shopping at the Forum Shopping Center. Plus, use of impressive onsite amenities, such as the basketball court, park, splash pad and playground. Be the first to live in this property in this recently completed one-story home. The beautiful open concept living space with Four bedrooms and Two baths. Guests are greeted by a lovely foyer that opens up to the main living area. The gorgeous kitchen features granite countertops and overlooks the family room. The grand Owner's Suite is nestled in the corner of the home for optimum privacy and boasts a spacious Owner's Bath and large walk-in closet. A two-car garage completes this 4/2 1,667 sq. ft. home.

Restrictions

Dogs: Dogs (ok)

Cats: Cats (ok)

Smoking: No Smoking

Section 8: Housing Assistance Not Accepted

Date Available: Immediately

Homemart Realty Group, Inc.

Office Location
284 Hurricane Shoals Road
NW ([map](#))
Lawrenceville, Georgia 30046

Ted Walter
646-765-5788

