

Cozy Renovated Two Bedroom Apartment

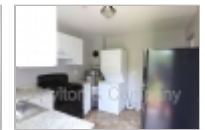
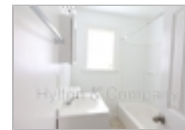
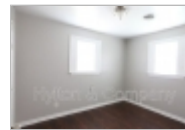
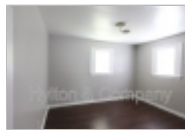
18046164542

473 Byrne Street Unit B
Petersburg, Virginia 23803

Rent: \$925.00 Size: 636 SqFt

2 Beds 1 Baths Apartment

Deposit: \$925.00 USD



Property Description

Welcome to your charming new abode at 473 Byrne Street, Unit B! Nestled in a prime location, this cozy unit presents two bedrooms and one bathroom, providing ample space for you to settle in and make it your own.

The spacious living area beckons you to unwind after a long day, while the adjacent kitchen comes equipped with essential appliances including a stove and refrigerator, ensuring your culinary adventures are a breeze.

With its single-story layout, this ranch-style residence promises easy living and effortless navigation. Plus, with washer/dryer hookups available, laundry day becomes a hassle-free affair.

Conveniently situated in Petersburg, this duplex offers swift access to major thoroughfares such as I-95, making commutes a breeze. Explore the historic charm of Old Town Petersburg, or soak in the vibrant atmosphere of nearby Fort Lee and other major attractions.

Don't miss out on the opportunity to call this delightful unit your new home sweet home. Schedule a viewing today and seize the chance to experience comfortable living at its finest. Your next chapter awaits at 473 Byrne Street, Unit B!

-
Disclosure: All Hylton & Company residents are enrolled in the Resident Benefits Package (RBP) for \$50/month which includes HVAC air filter delivery (for applicable properties), credit building to help boost your credit score with timely rent payments, \$1M Identity Protection, our best-in-class resident rewards program, renters' insurance and much more! More details upon application. This fee is already included on the rent.

-
Lease term: 24 months.

Pet policy: No pets.

Amenities: Washer and Dryer Hook Up

Restrictions

Date Available: Immediately

Dogs: No Dogs

Cats: No Cats

Hylton & Company

Office Location

18046164542

