

LAVISH PROPERTY WITH GARAGE INCLUDED IN RENT PRICE 2-

13609757666

2300 Main Street Unit 338
Washougal, Washington 98671

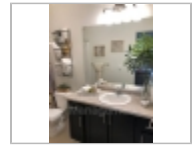
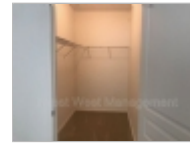
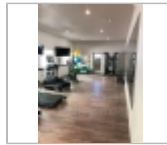
Rent: \$1,795.00 **Size:** 1080 SqFt

2 Beds **2** Baths **Apartment**

Deposit: \$600.00 USD

For more information:

<http://www.iwminfo.com>



Property Description

Courtyard facing unit, (NEWER CONSTRUCTION) Washougal Apartment located at the gateway to the Gorge. Washougal offers a spectacular quality of life including nearby walking/hiking trails. Columbia River access, nearby parks, quaint shopping and restaurants. Located minutes from the famous Pendleton Woolen Mill. Contact On-site manager at 360-567-4357.

Amenities: Clubhouse with fitness center, Courtyard, Single car garage, Stainless steel appliances, Quartz counter tops, Hardwood-looking vinyl, Ceiling fans, Washer/Dryer Included, Convenient Location, Close to Columbia River, Close to shopping and restaurants, Renter's Liability Policy of \$15.00/month required, For more information please contact 360-567-4357, Or visit us on our website at mainstivillage.net, Non-refundable admin fee: \$300, Small Pets Only 35lbs or less \$400 Refundable Deposit for each pet, Water/Sewer/Garbage \$120/monthly

Restrictions

Date Available: Immediately

Dogs: Dogs (ok)

Cats: Cats (ok)

Invest West Management, LLC

Office Location

12503 SE Mill Plain Blvd. Suite 260 (map)

Vancouver, Washington 98684

13609757666



EQUAL HOUSING
OPPORTUNITY