



LANDSCAPE VISION

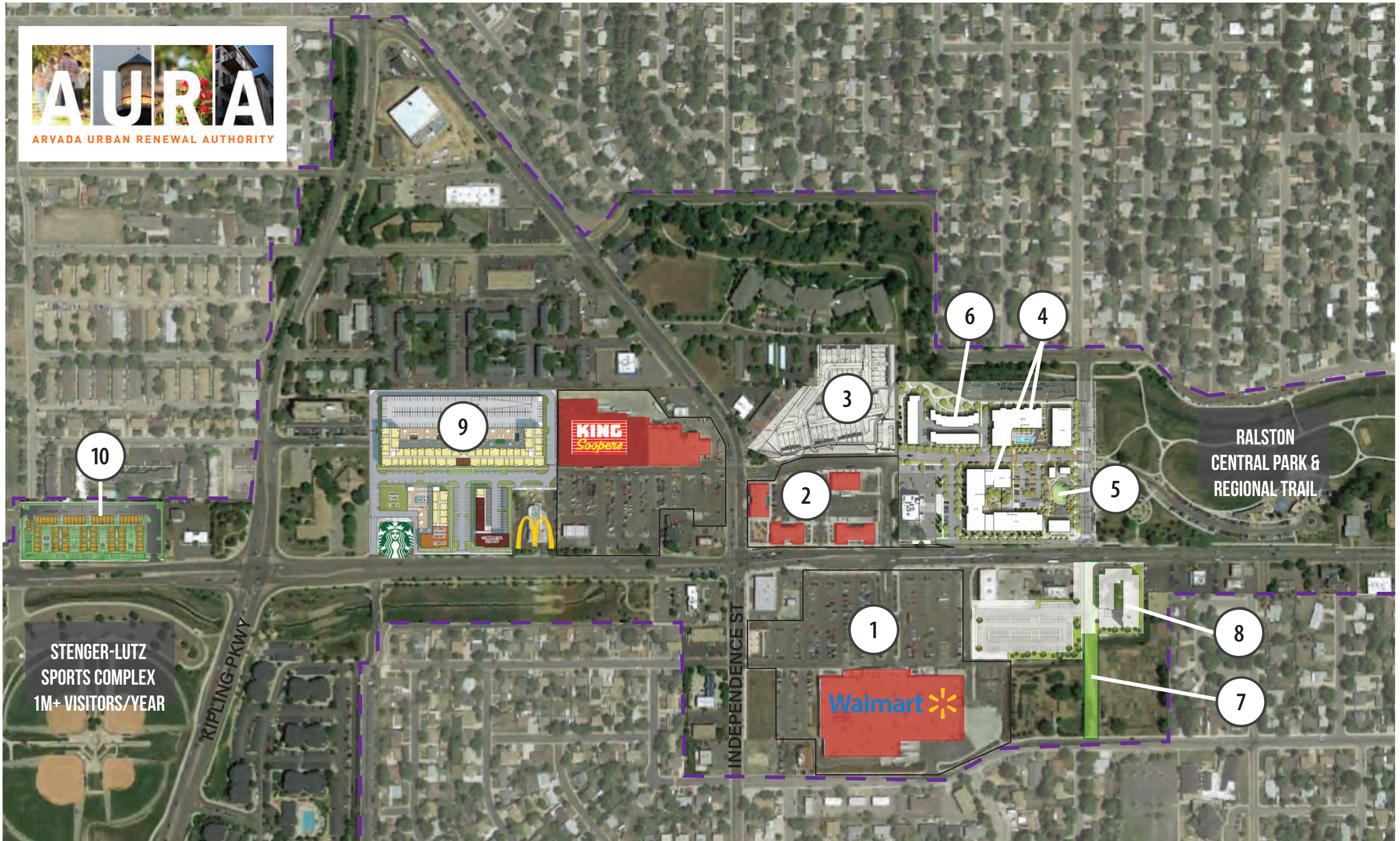
GARRISON STREET PASEO

Arvada Urban Renewal Authority

Arvada, CO

April 22, 2021

CONFLUENCE



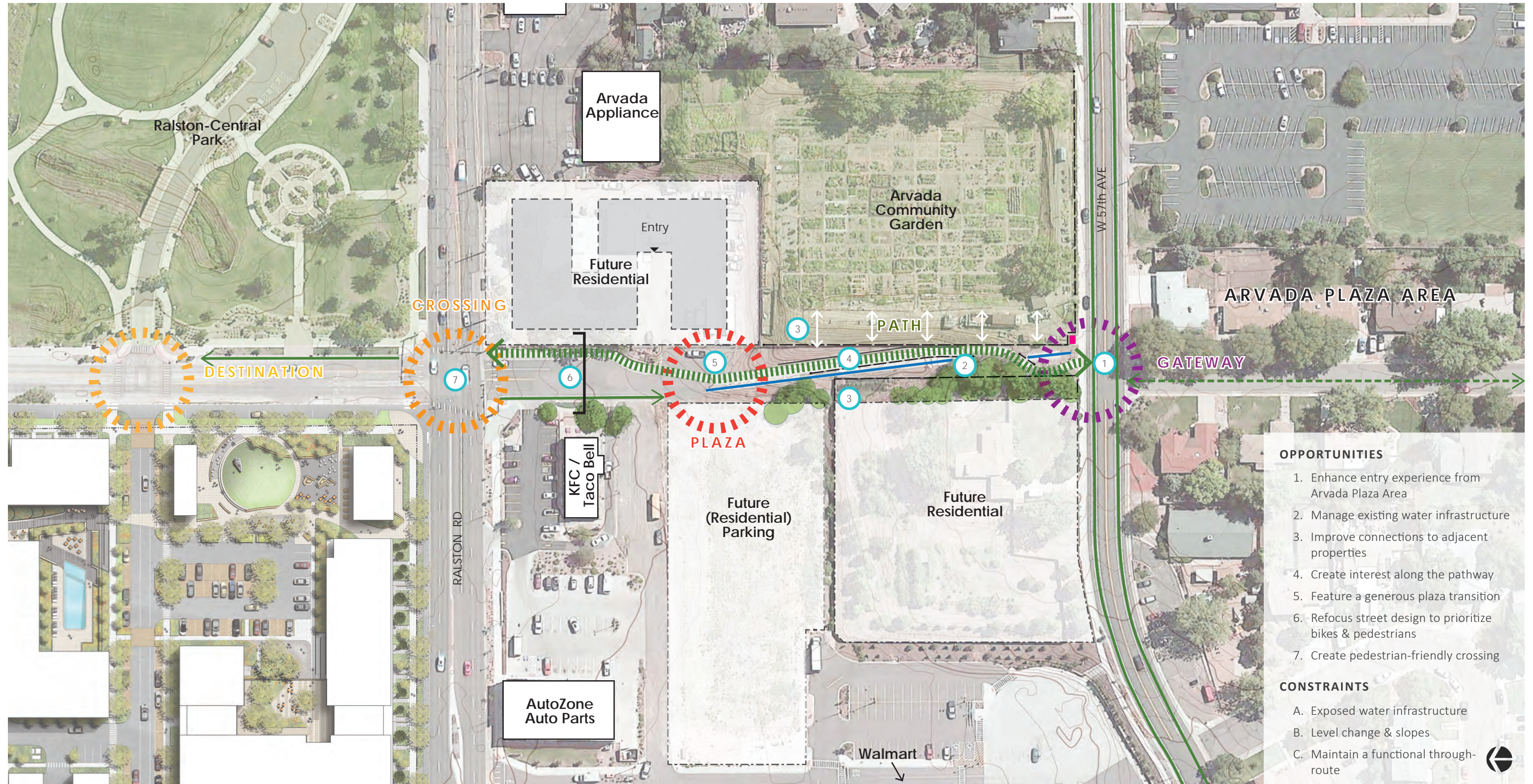
SITE ANALYSIS

Opportunities + Constraints

- On-Street Bike Lanes
- - - Bicycle-Friendly Streets
- ||||| Garrison St Connection

- Exposed Water Infrastructure
- - - Fence Lines & Railings
- Retaining Wall

- Dumpster
- ⊙ Site Node
- ① Site Analysis Notes



- OPPORTUNITIES**
1. Enhance entry experience from Arvada Plaza Area
 2. Manage existing water infrastructure
 3. Improve connections to adjacent properties
 4. Create interest along the pathway
 5. Feature a generous plaza transition
 6. Refocus street design to prioritize bikes & pedestrians
 7. Create pedestrian-friendly crossing
- CONSTRAINTS**
- A. Exposed water infrastructure
 - B. Level change & slopes
 - C. Maintain a functional through-route

ARVADA | A VIBRANT AGRICULTURAL COMMUNITY



Community Gardens Context

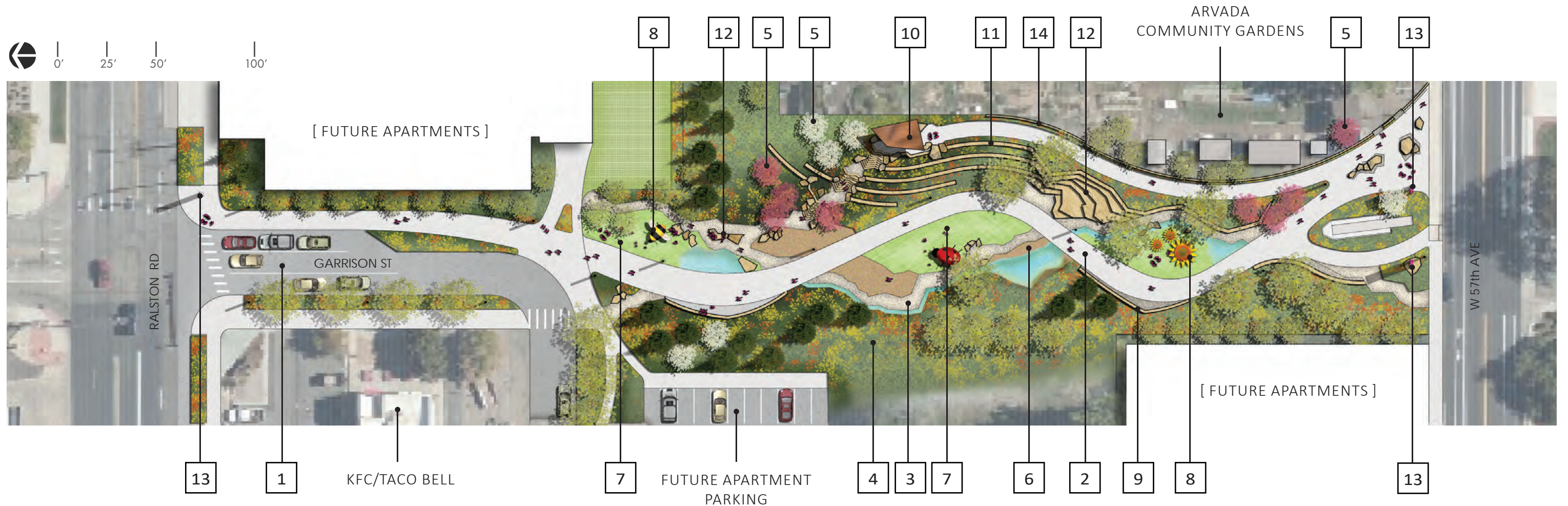
Arvada's Roots

Growing & Cultivation

Vibrant Gardens

Learning Landscape

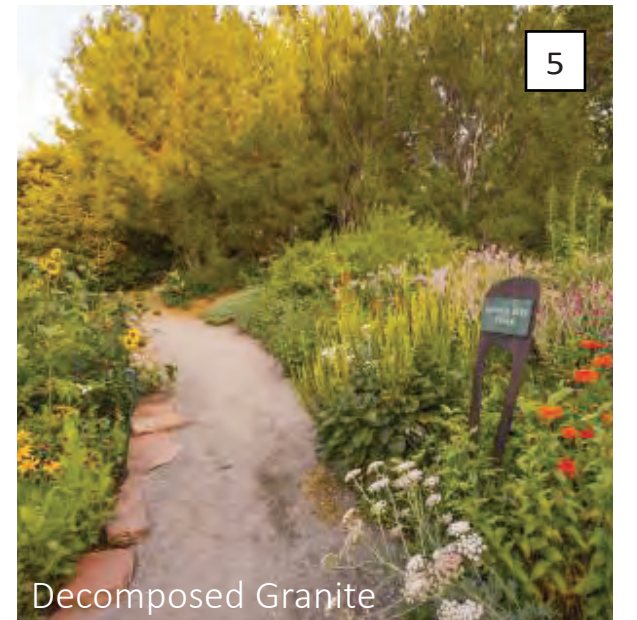
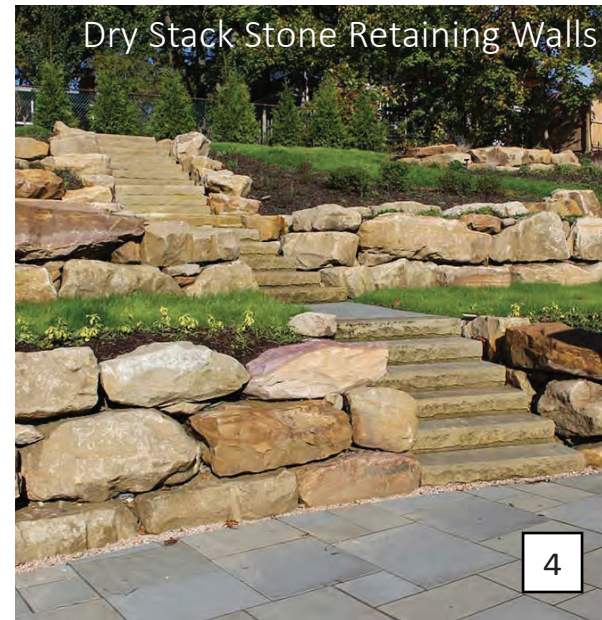
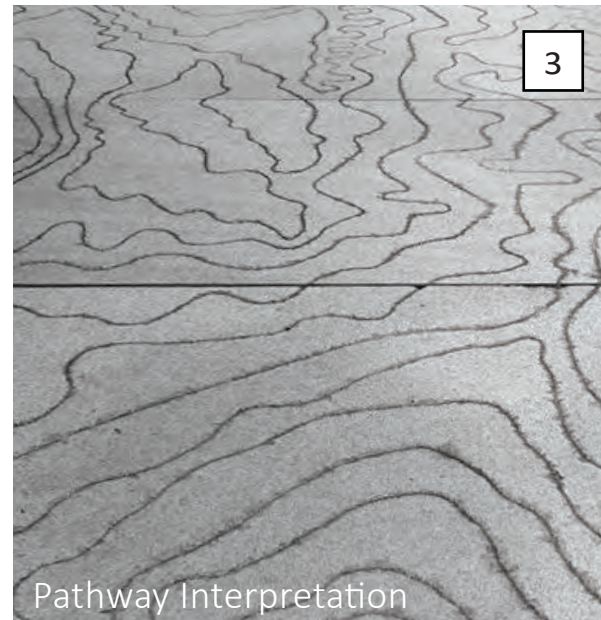
GARRISON ST PASEO



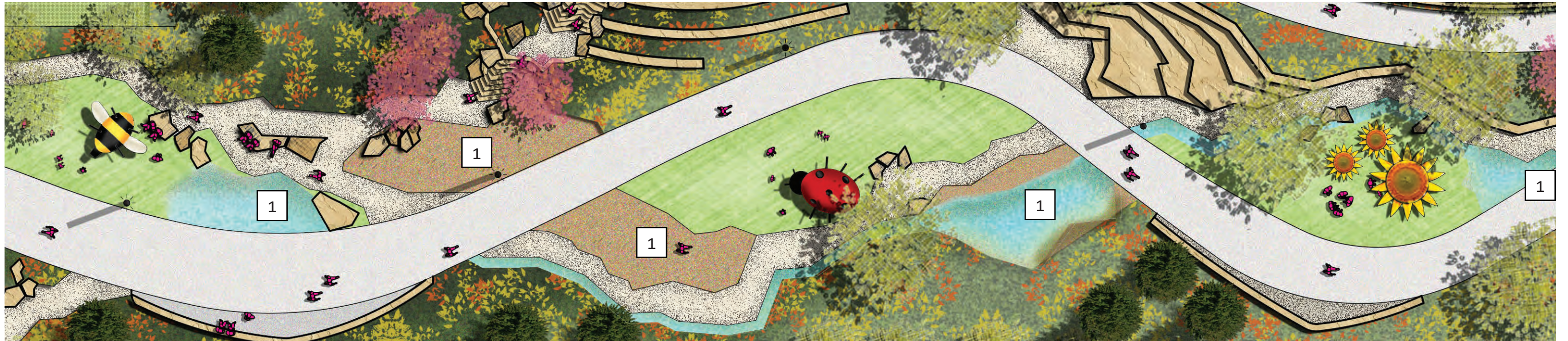
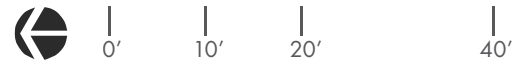
Garrison Street Paseo takes inspiration from the historic roots of the Arvada community. Once a vibrant agricultural community, Arvada found its early identity in cultivation. Today, the Arvada Community Garden embodies Arvada’s historic agricultural spirit as an endeared local landmark. Its direct adjacency to the Garrison Street corridor offers a unique opportunity to blur the lines between these two spaces and bring the agricultural spirit into the pathway. Garrison St Paseo blends historic references to agriculture while also creating a learning landscape for the importance of pollinators. The design tells a story of how these themes are inherently linked and support each other. Large garden sculptures offer engagement opportunities along the route, set among pockets of pollinator and edible gardens. An accessible overlook takes advantage of the Community Garden hill and views to the Front Range, with a stair cascading down the slope to rejoin the main path. The accessible pathway spills out at the Ralston Road & Garrison Street crossing, linking pedestrians to the amenities of the Ralston Creek District.

- | | |
|--|---------------------------------------|
| 1 Garrison Street Adjustment | 8 Playful Sculptures |
| 2 Accessible Pathway | 9 Seatwall |
| 3 Garden Paths | 10 Overlook |
| 4 CO Native Pollinator Planting | 11 Stone Terraces |
| 5 Fruiting Trees | 12 Stone Seating |
| 6 Demonstration Gardens | 13 Wayfinding |
| 7 Lawn Area | 14 Community Garden Fence Line |

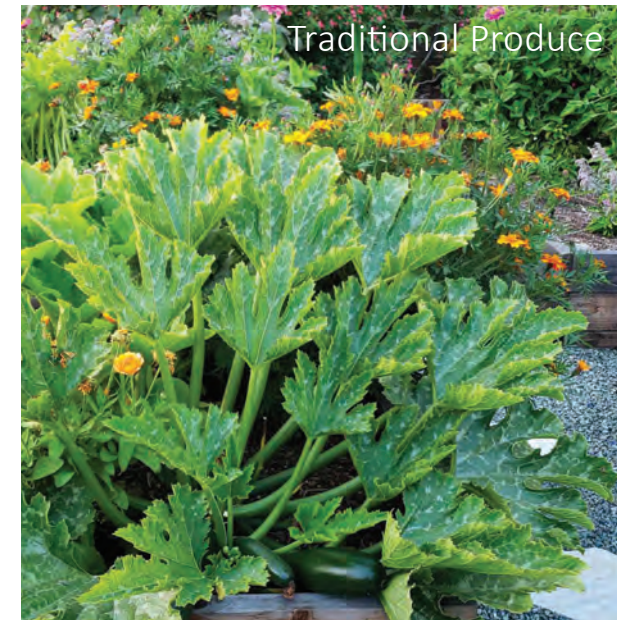
PATHWAY



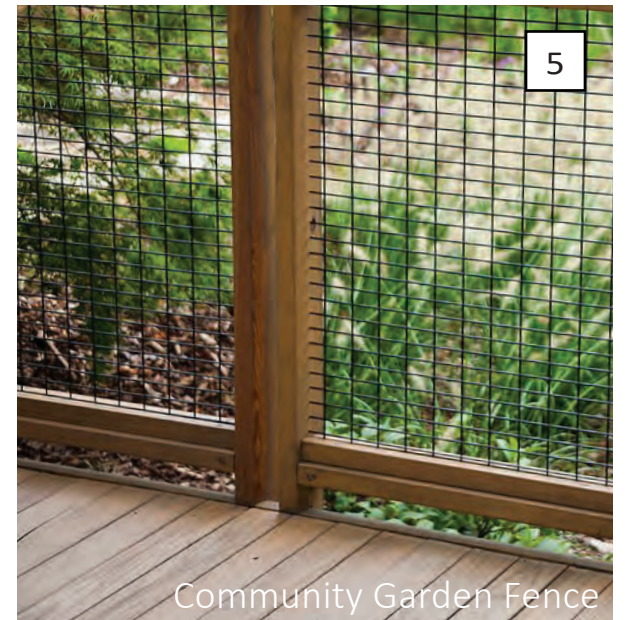
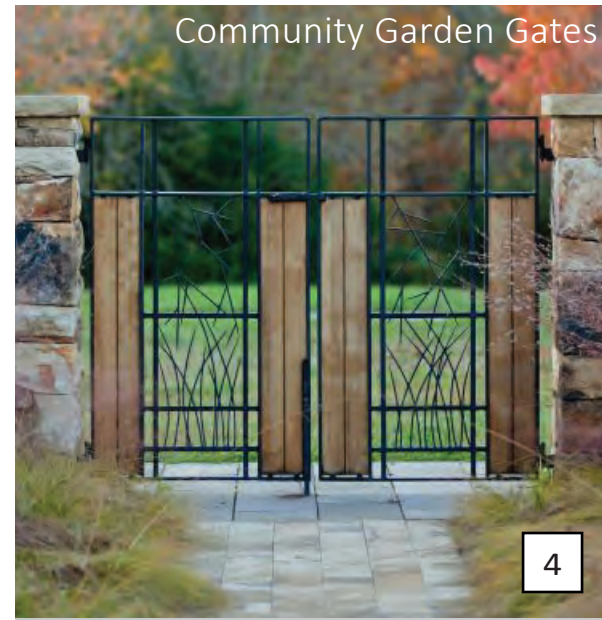
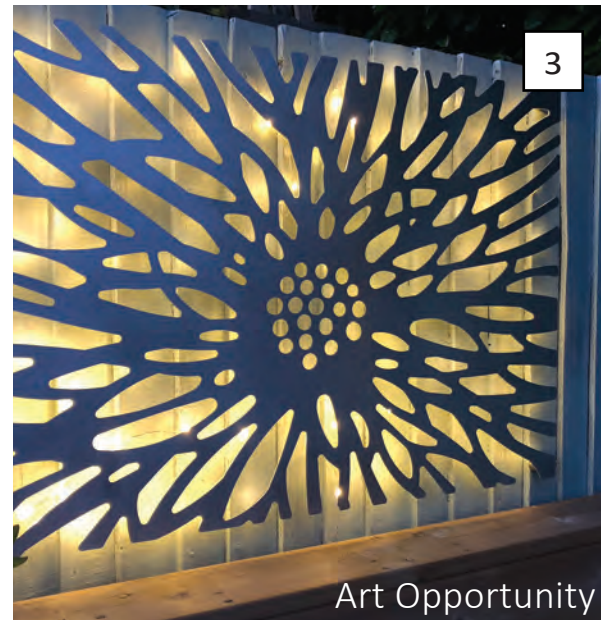
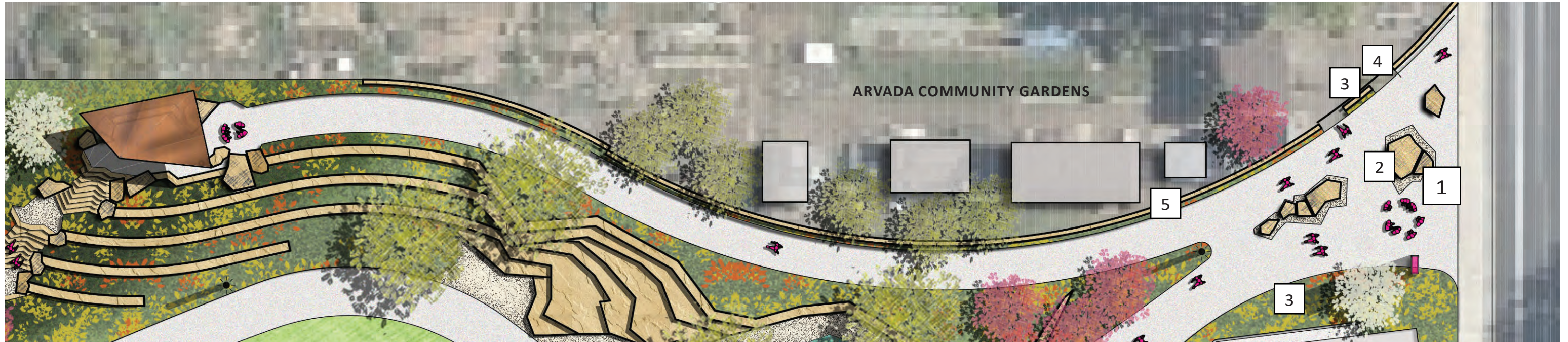
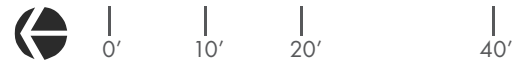
DEMONSTRATION GARDENS



Raised Garden Beds



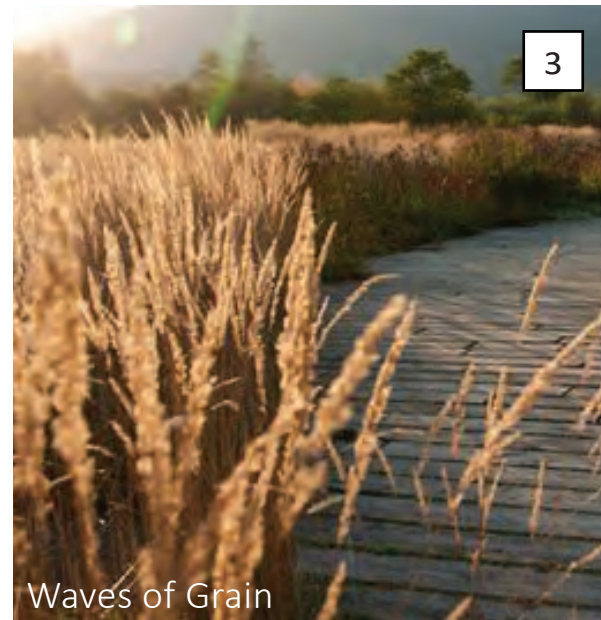
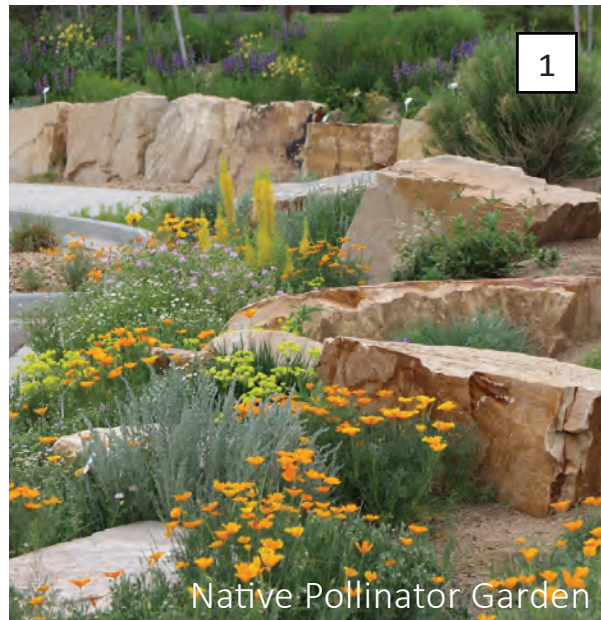
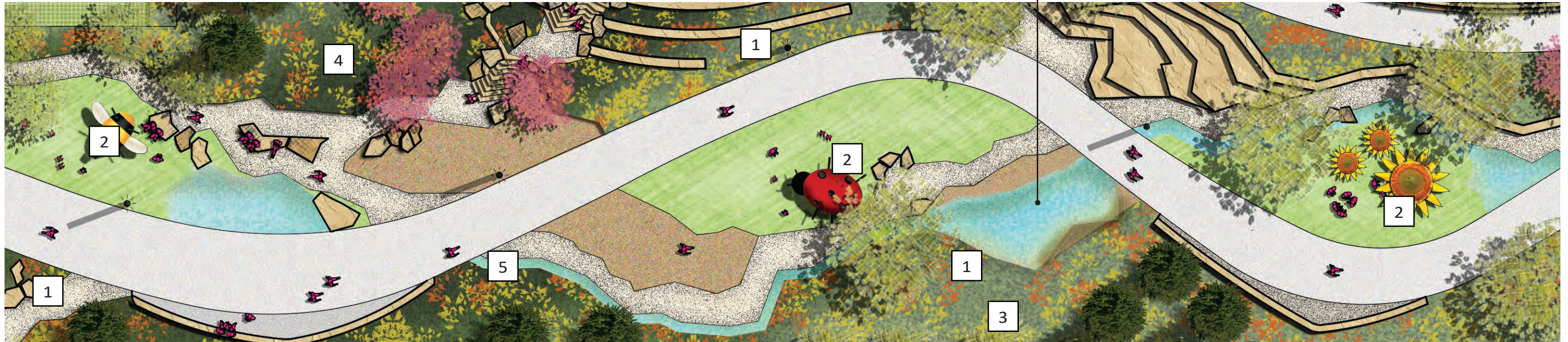
COMMUNITY GARDENS PLAZA



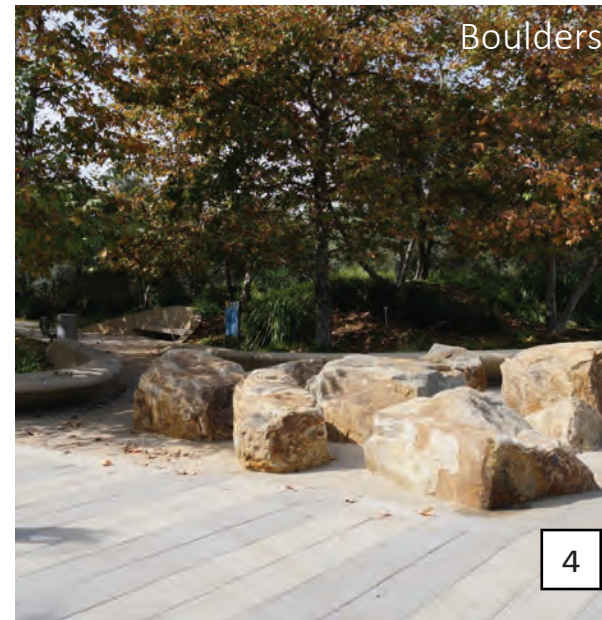
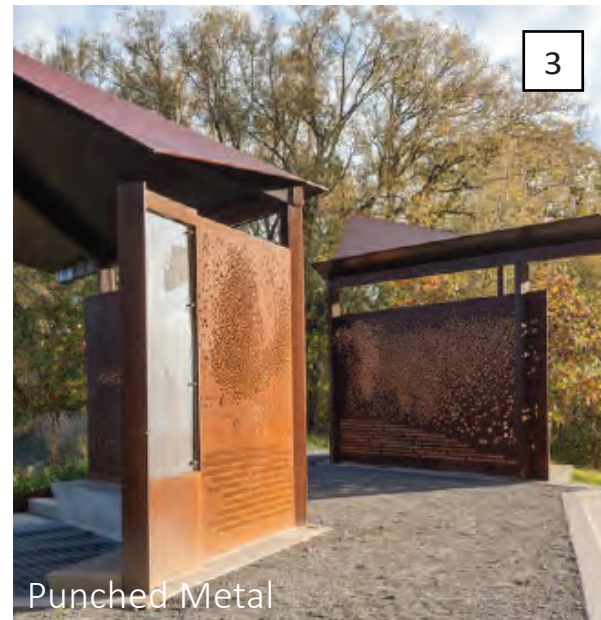
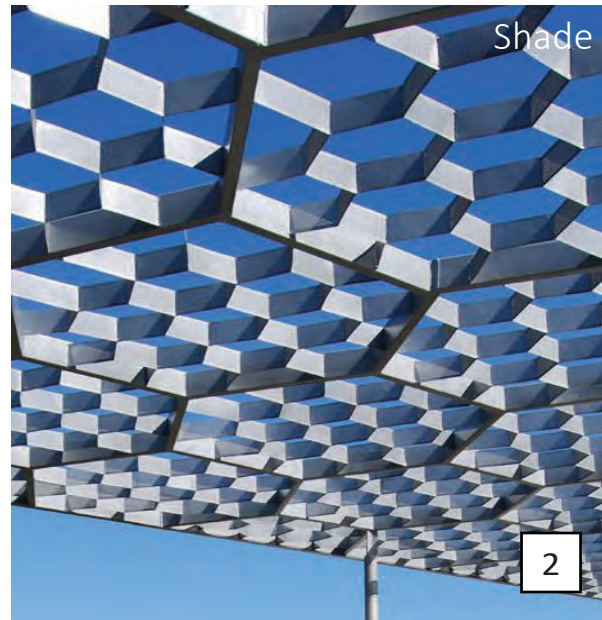
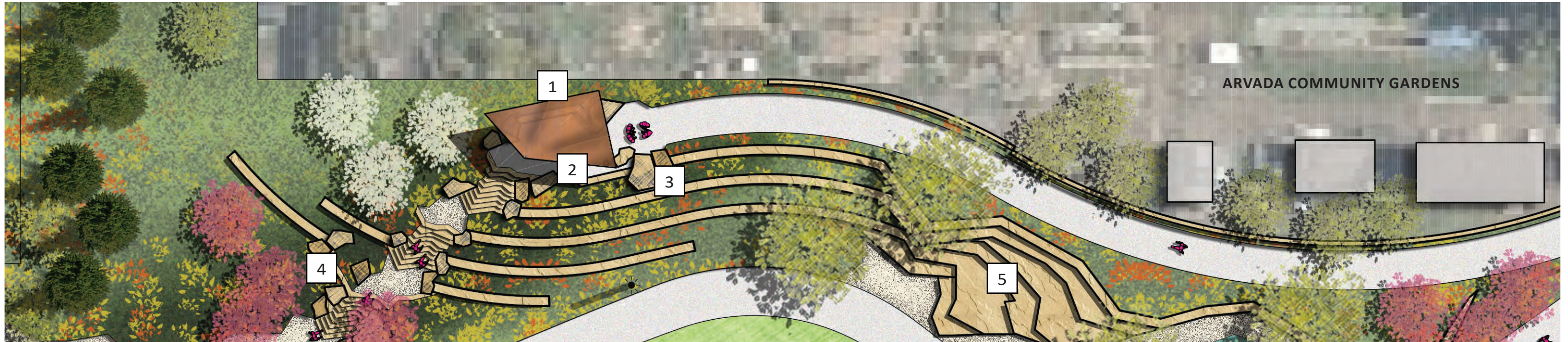
FEATURED GARDENS



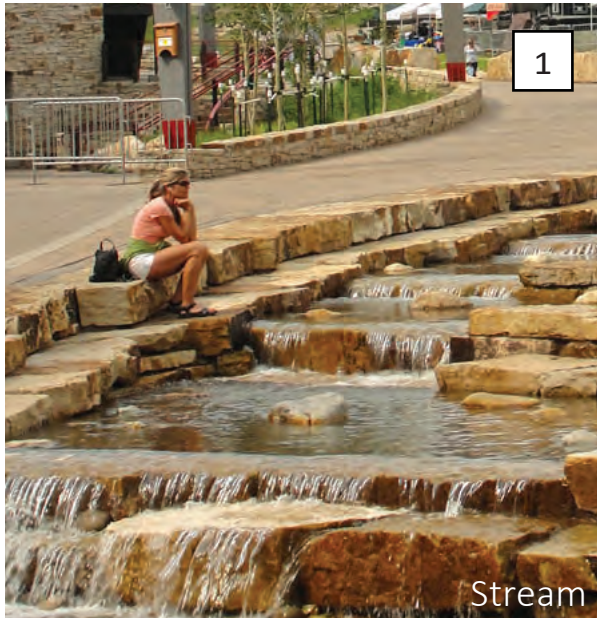
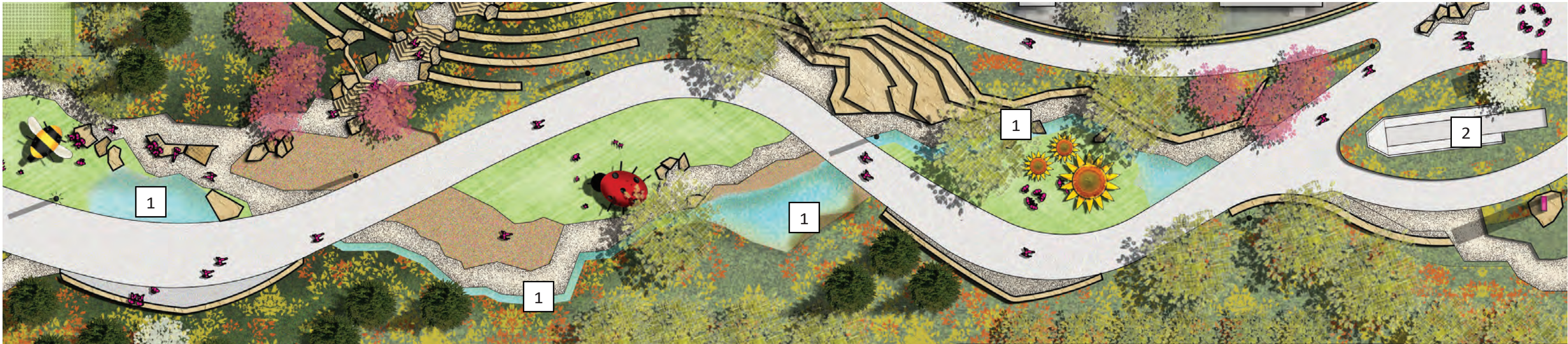
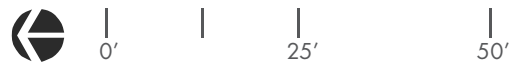
ARVADA COMMUNITY GARDENS
DEMONSTRATION PLOTS



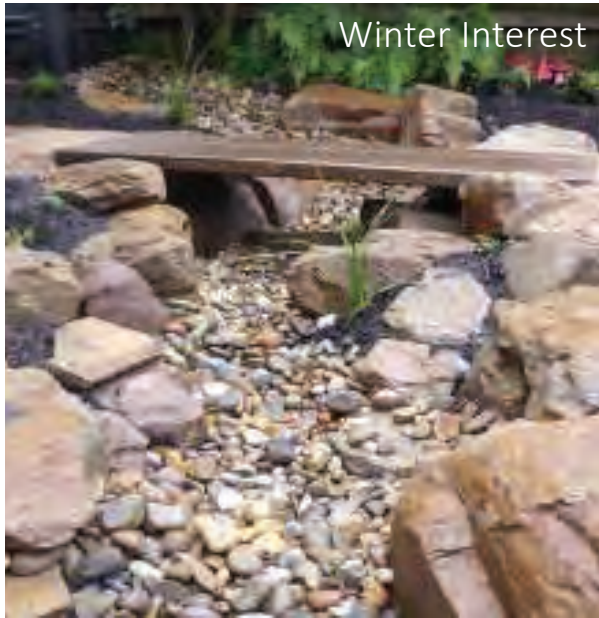
OVERLOOK



WATER FEATURE



Stream



Winter Interest

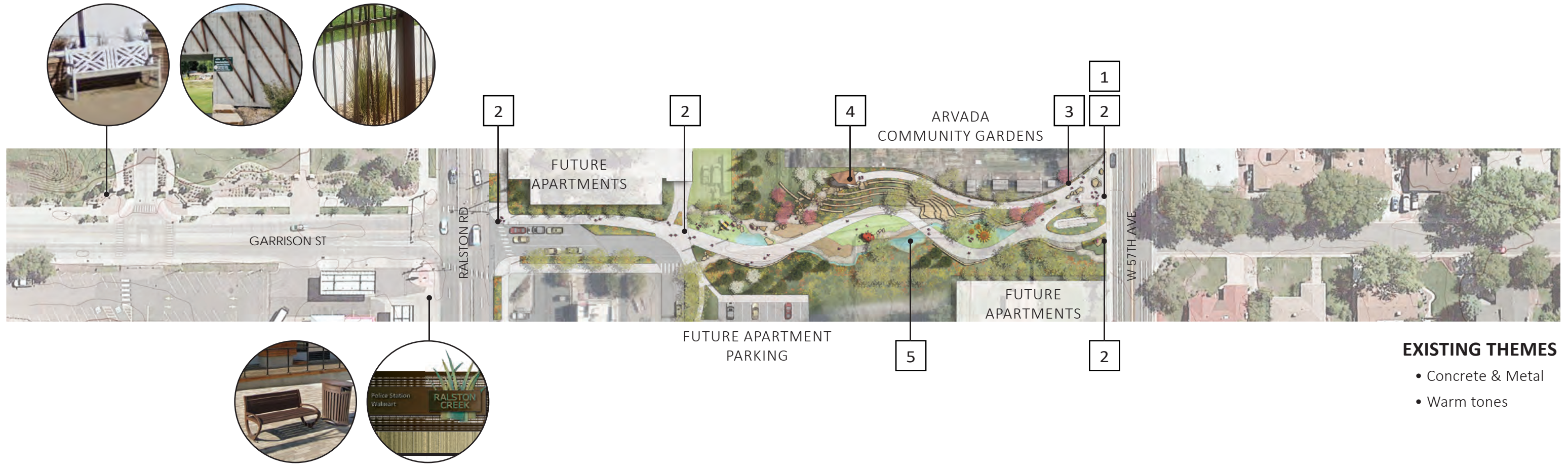


Cascading Water



Existing Gate Valve

SITE ELEMENTS



EXISTING THEMES

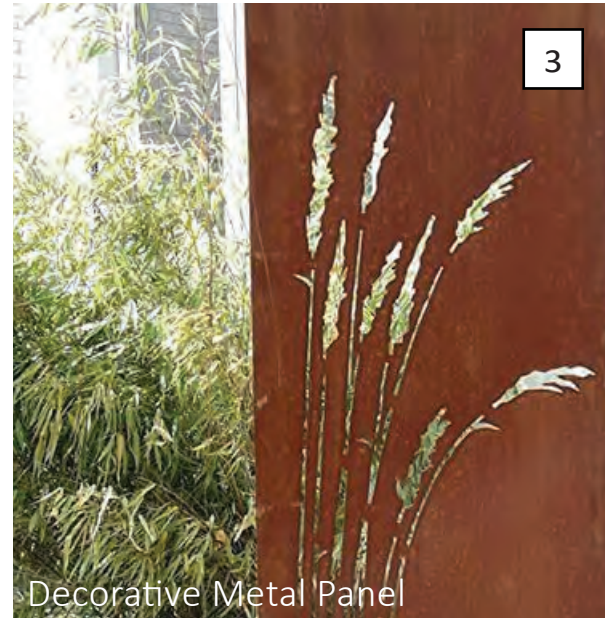
- Concrete & Metal
- Warm tones



Bike Rack



Wayfinding



Decorative Metal Panel



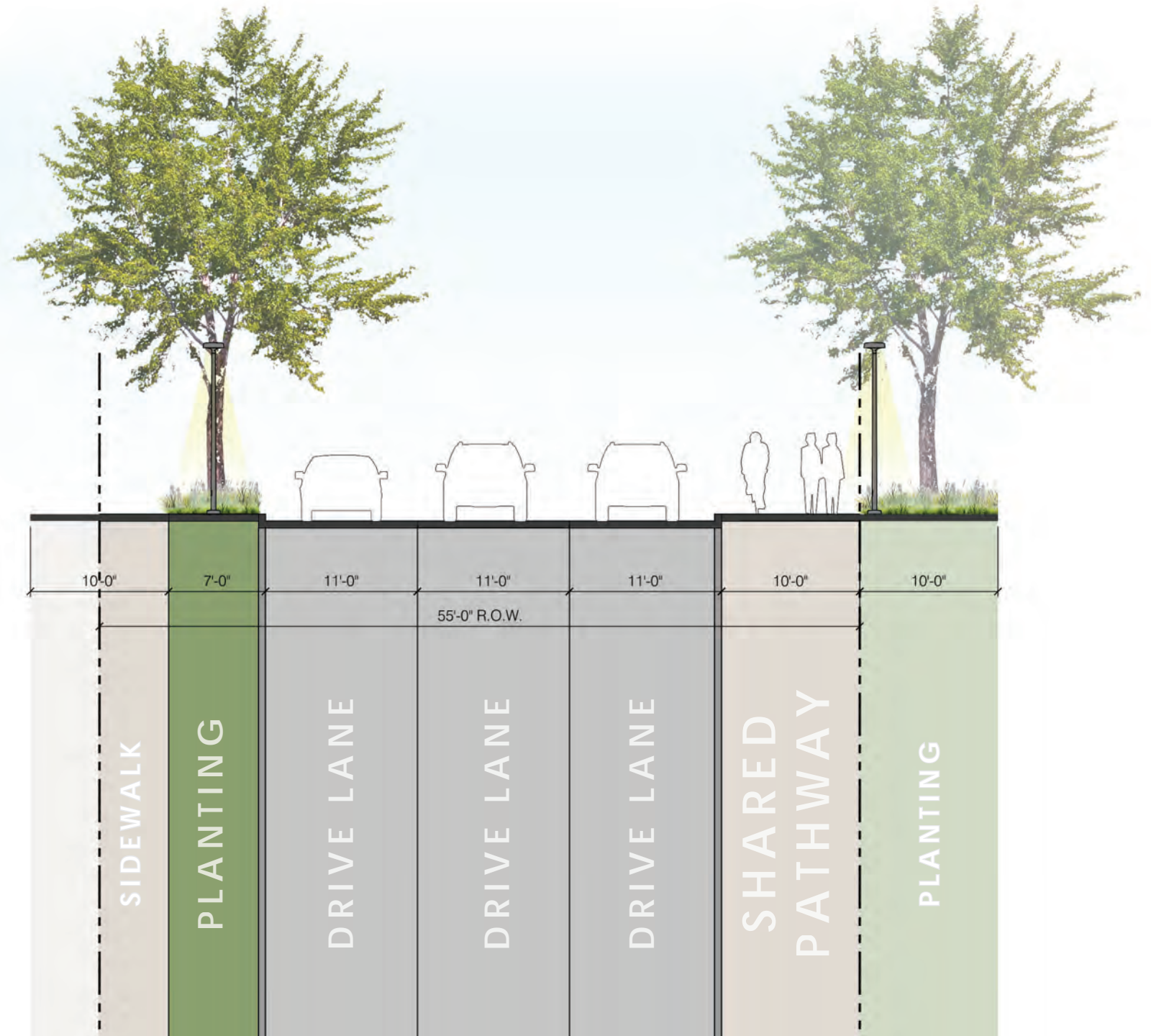
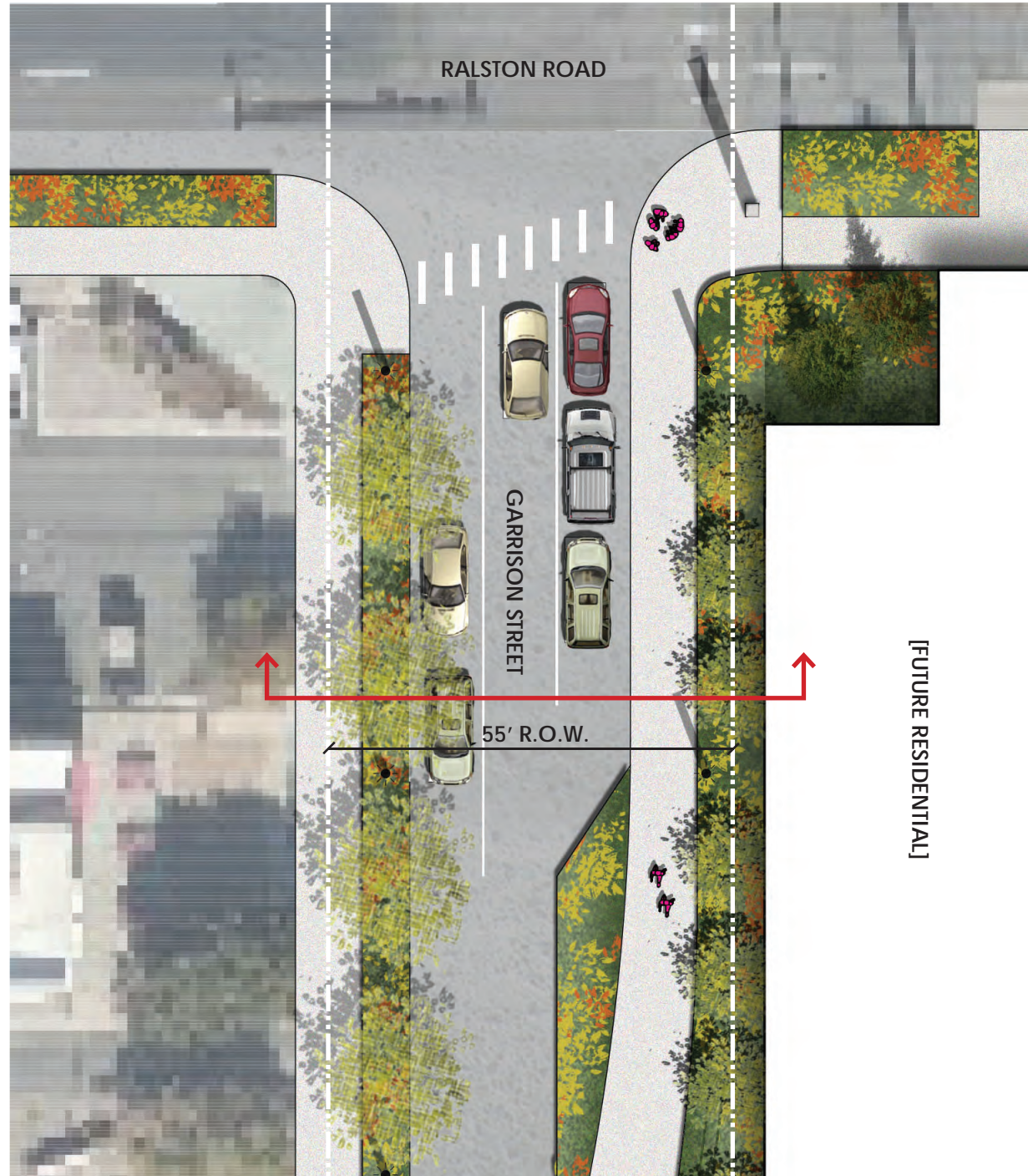
Signage



Terraced Garden Beds

GARRISON STREET

Proposed Vehicular Cross-Section





THANK-YOU