

Lovely 2BD Townhomw W/Garage ~ June 1st

(480) 276-0054

1406 W Emerald Ave Unit 117
Mesa, Arizona 85202

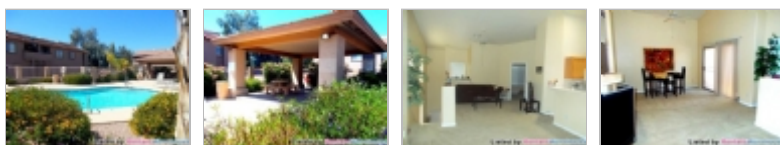
Rent: \$850.00 **Size:** 1250 SqFt

2 Beds 2 Baths **Townhouse**

Deposit: \$850.00 USD

For more information:

<http://www.RWArizona.com>



Property Description

Available June 1 ~ Lovely 2BD/2BA 2nd floor townhome w/private attached 1 car garage. Washer & dryer hook ups only. Great location at the back of the complex next to pool & guest parking. Carpets throughout the main living area. Kitchen has all the appliances, a pantry, bright & open to the dining area/living room. Split floorplan, both bedrooms/bathrooms on separate sides. Master boasts double sinks & a large walk in closet. South facing balcony, sunshades on all the windows saves on electric, extra storage off the garage. Water, sewer & trash included. Sorry No Pets. Additional 4% TP Tax/Processing Fee Monthly. Contact Dave: 480-276-0054

Restrictions

Dogs: No Dogs

Cats: No Cats

See description for pet restrictions.

Lease Details

12 Month Lease Minimum. \$40 App Fee,
\$150 Admin Fee

Date Available: Immediately



Renters Warehouse

Office Location
3835 North 32nd Street #8 (map)
Phoenix, Arizona 85018

Dave Meiners

(480) 276-0054

